



Cuyahoga River Old Channel (CROC)

Sediment Project

CONFINED DISPOSAL FACILITY

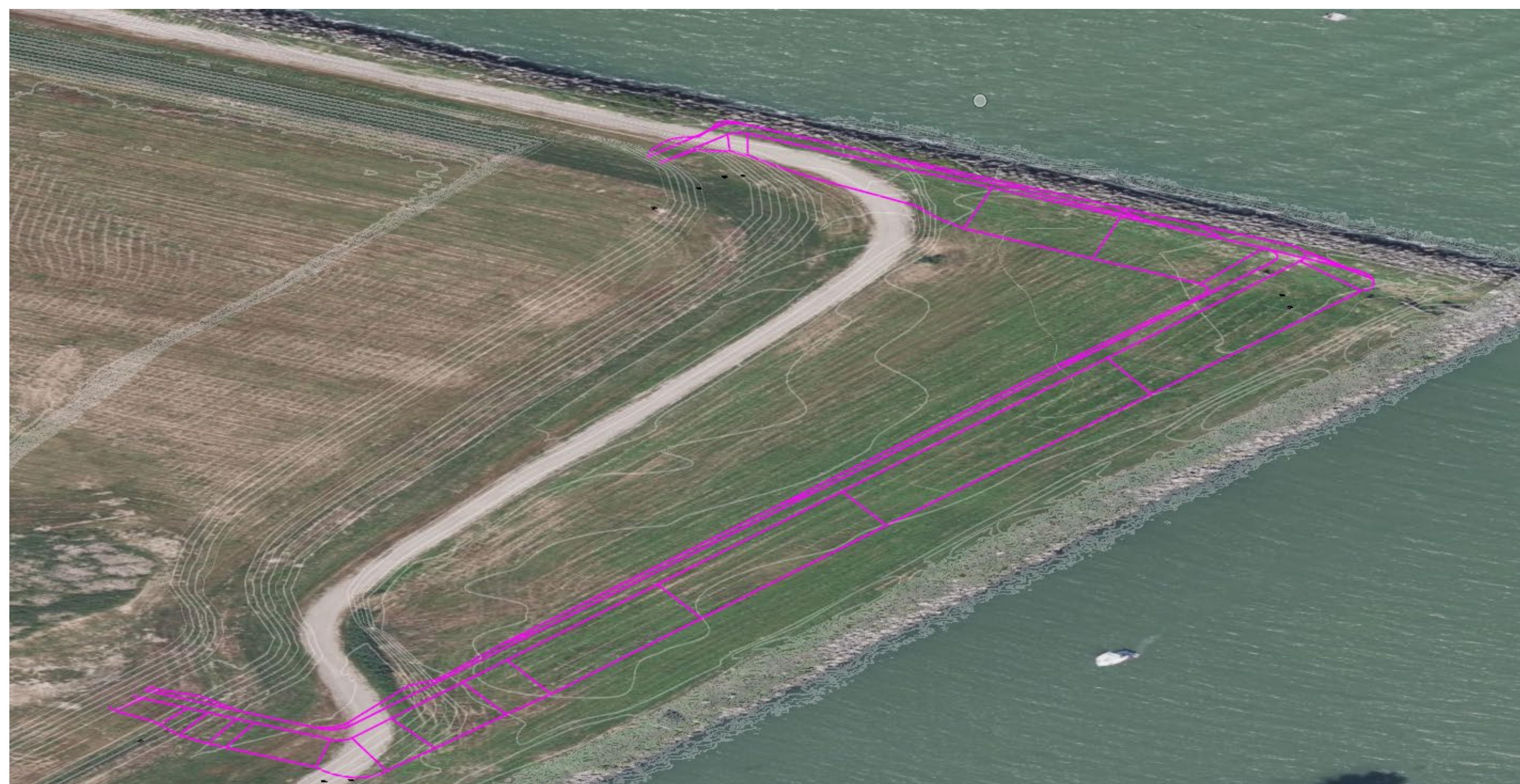


Figure 1 is a conceptual drawing of CROC CDF 12.

TERMINOLOGY

A confined disposal facility (CDF) is a structure designed to contain contaminated dredged sediment. Since 1970, 45 CDFs have been constructed and operated to manage dredged contaminated sediments from Great Lakes harbors and channels.

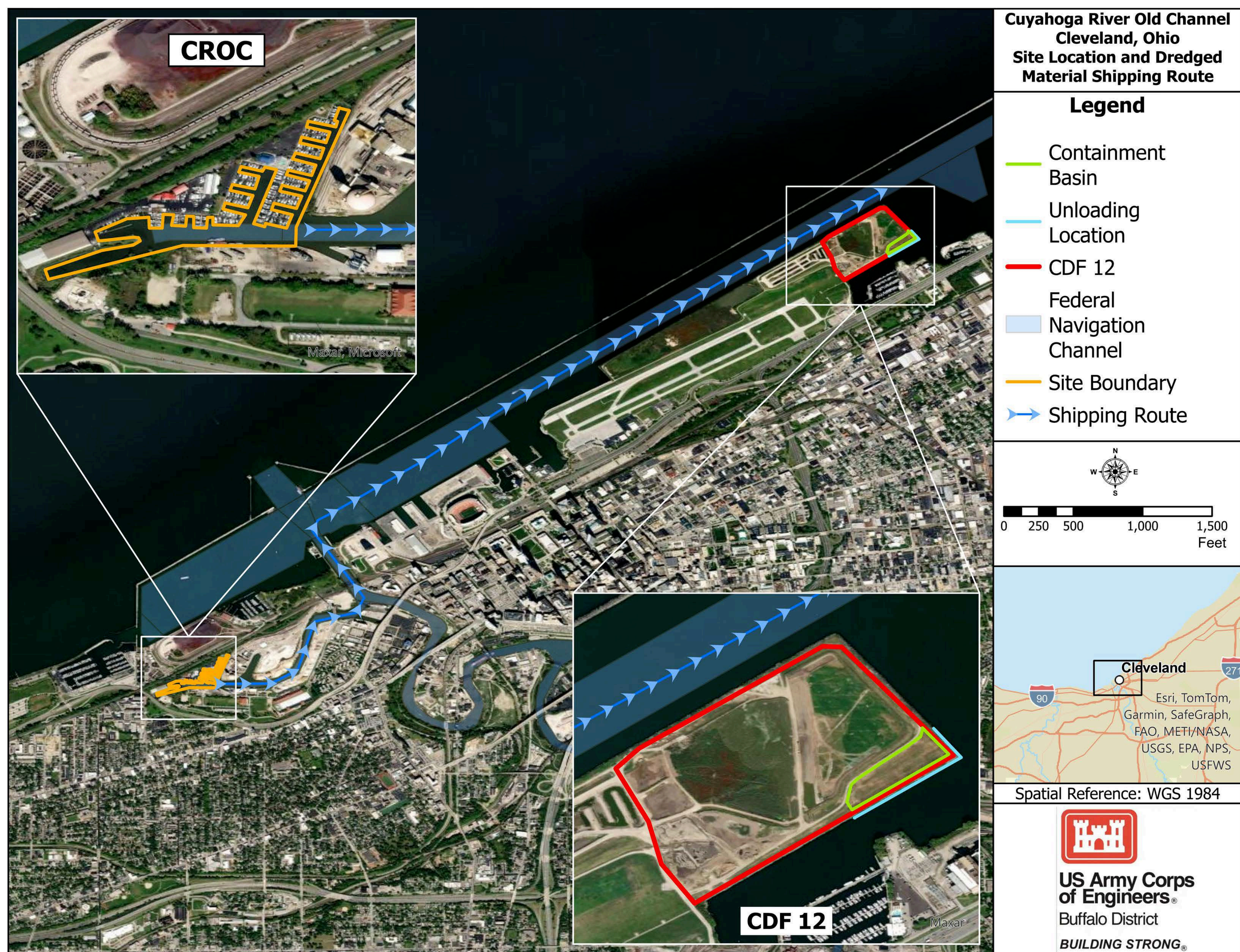


Figure 2 is a map of the dredged sediment shipping route.



Figure 3 is a view of area where CDF 12 will be constructed.



Figure 4 is a conceptual example of CDF 12 berm post construction.

PURPOSE

Approximately 100,000 cubic yards of contaminated sediment will be dredged (removed) from the CROC and transported by barges to the Port's sediment processing facility, where it will be dewatered and properly disposed of in CDF 12.